



CRAWFORD NOTCH

B. NORTHERN PARKS



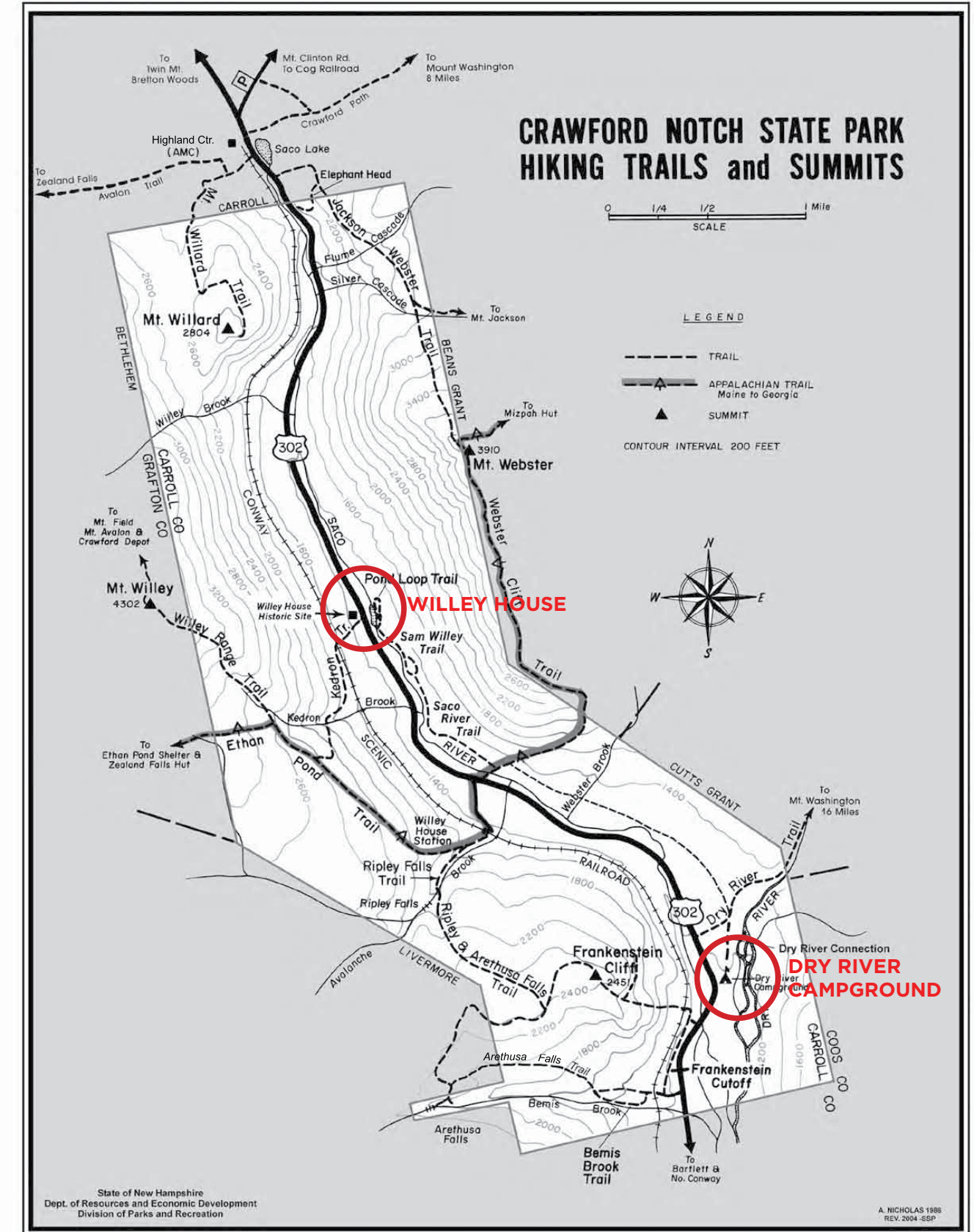


- > Appalachian Trail
- > Hiking
- > Waterfalls
- > Waysides
- > Views of the incredible Route 302 corridor surrounding the campground
- > Historic sites and railroads

NEAREST URBAN AREA NORTH: BRETTON WOODS / CARROLL
 NEAREST URBAN AREA SOUTH: NORTH CONWAY / BARTLETT

PARK INFO	ACTIVITIES	PARK AMENITIES	CAMPSITE TYPES
<ul style="list-style-type: none"> > 5,775 Acres > 36 Tent Sites > Established: 1913 Willey House: 1920's Dry River: 1950's 	<ul style="list-style-type: none"> > Fishing > Hiking > MTN Biking > Snowshoeing > XC Skiing 	<ul style="list-style-type: none"> > Bathhouse > Pit Toilets > Visitor Center > Store 	<ul style="list-style-type: none"> > Lean-To > Tent Only > Standard (room for trailer, no hookups)

- > Crawford Notch State Park was established as a state reservation in 1913 and became a state park in 1950.
- > The park consists of nearly 6,000 acres on both sides of NH 302. The land extends to the summits of the mountains that border the Saco River Valley
- > The headquarters at the Willey House Site in the middle of the park includes visitor center, picnic areas and restrooms overlooking a small pond.
- > The Dry River Campground is near the southern edge of the park, in a flat area within the confluence of the Saco and Dry rivers.
- > The park offers a diverse array of hiking opportunities accessing both waterfalls and vista points.



EXISTING CONDITIONS

DRY RIVER

ENTRANCE AND ARRIVAL

- > Office proximate to entry
- > Lack of trash / recycling enclosure at exit

ROUTE 302

- > Proximity to road adds a level of noise to the campground

RIVER CORRIDOR AND HYDROLOGY

- > River is an asset to the campground and guest experience
- > Flooding and erosion are challenges

TRAIL NETWORK

- > Trail to river crosses several drainages and is hard to follow
- > Proximity to overall trail network is great

-  33 Standard Sites (Can accommodate tent, pop-up, or RV)
-  Bathhouse
-  3 Lean-to Shelters
-  4 Pit Toilets
-  Trail head
-  Trails
-  River / Stream



SITE UTILIZATION DRY RIVER

QUICK FACTS

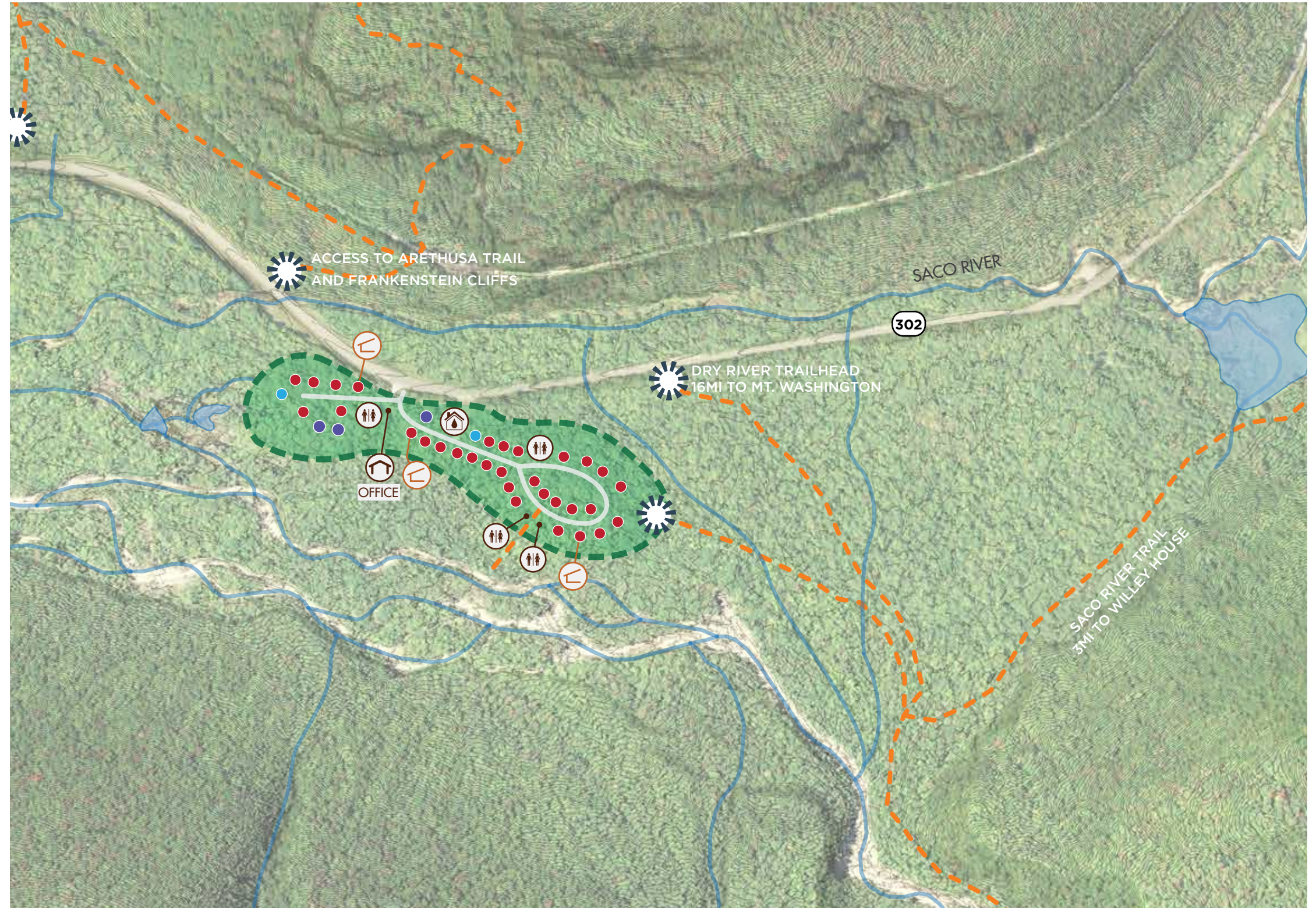
Average 5-Year Utilization: 57.64%
 Average Peak-Season Utilization: 81.46%
 Average Off Season Utilization: 44.96%

KEY

- < 15 Percent Annual Utilization
- < 50 Percent Annual Utilization
- > 50 Percent Annual Utilization

UTILIZATION TRENDS

Dry River Campground has 36 campsites which include 33 standard sites and 3 lean-tos. Of the available sites, 5 sites have less than a 50 percent utilization rate, and 3 have a utilization rate of less than 15 percent.



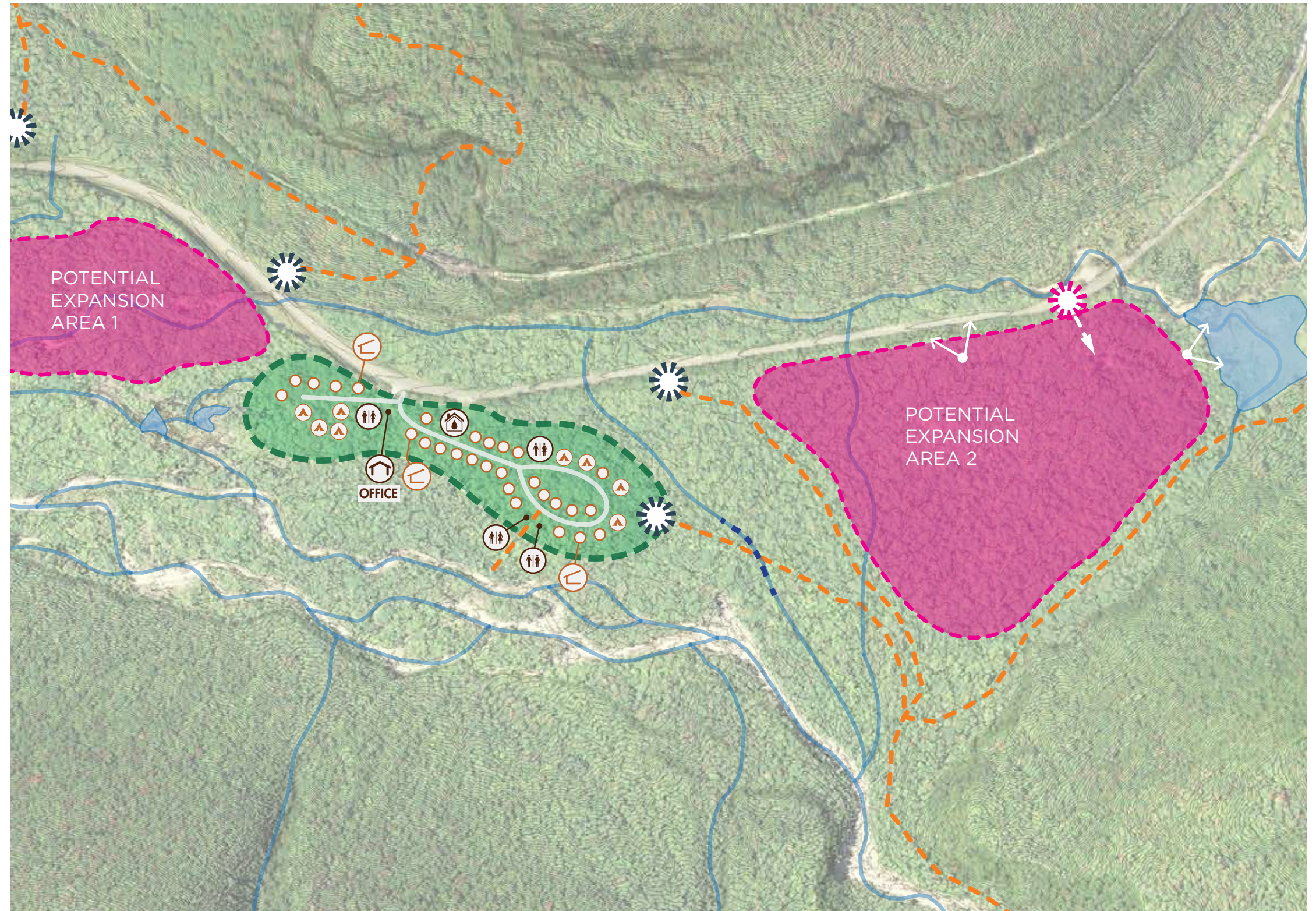
EXPANSION OPPORTUNITIES DRY RIVER

EXPANSION AREA 1

- > Size: Approx. 24 Acres
- > Slope: 2-10%
- > Adjacent to existing campground
- > Constrained by existing drainages and flooding

EXPANSION AREA 2

- > Size: Approx. 60 Acres
- > Slope: 2 - 15%
- > Relatively flat terrain conducive to development with mature deciduous forest canopy
- > Proximate to existing campground with existing trail network connection
- > Potential to open up views of cliffs to west
- > Potential views of peaks, over brook and wetlands to the north
- > Maintain buffer from road to protect from highway sounds
- > Deep gully washed out from flood, road connection between sites would require long-span bridge



ARCHAEOLOGY REVIEW

Phase IA Archaeological Sensitivity Assessment was completed for the proposed Crawford Notch State Park Campground Expansion Project in Harts Location, New Hampshire. The project area is situated in extremely rocky, uneven terrain. No archaeological sites or areas of archaeological sensitivity were identified, and no further study is recommended.

HISTORIC SIGNIFICANCE

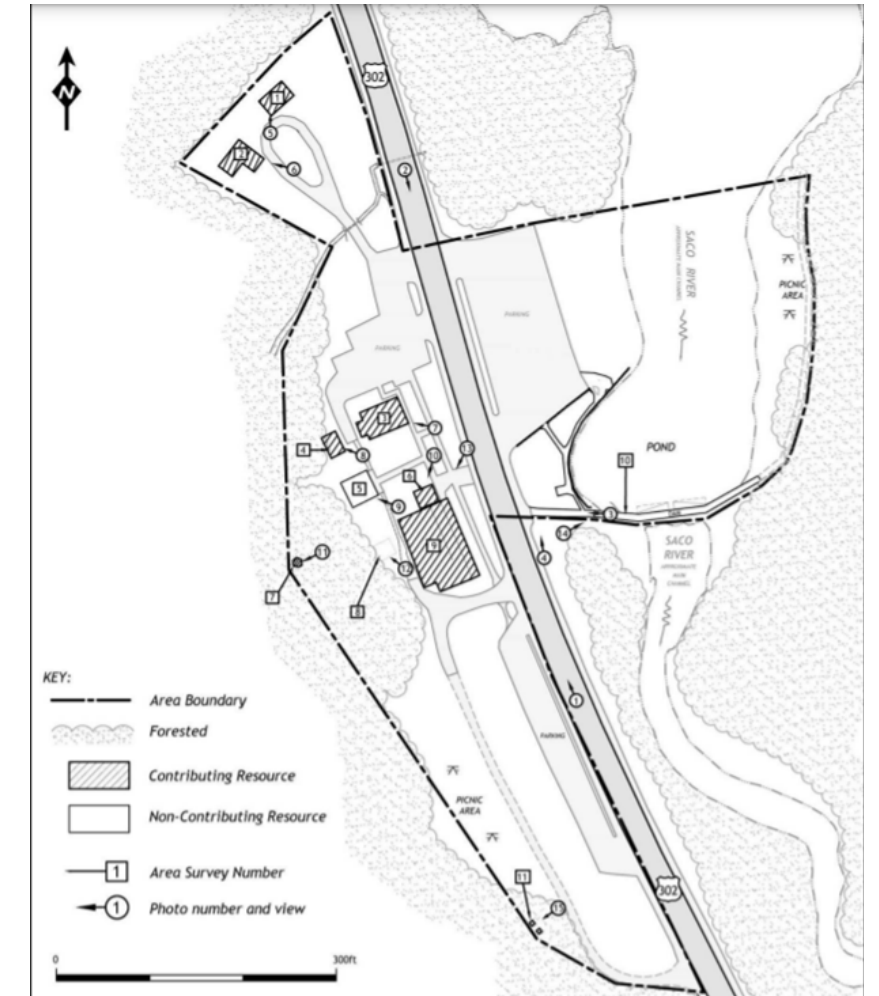
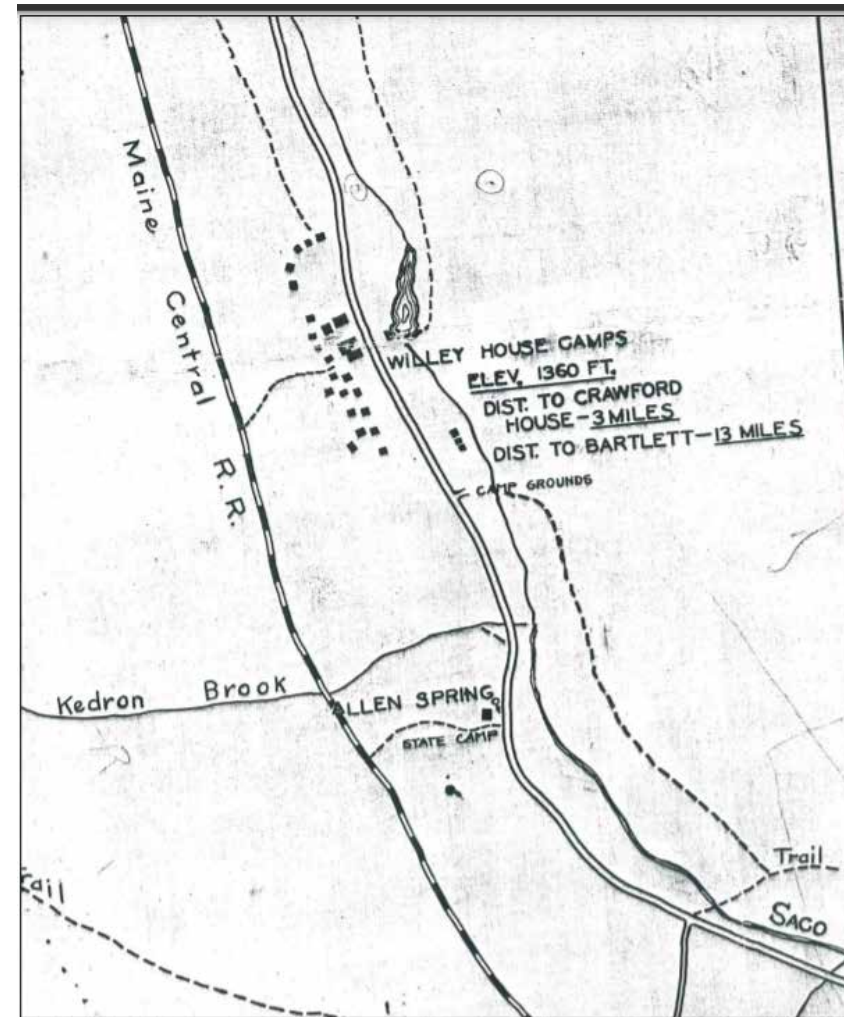
Crawford Notch State Park was established as a state reservation in 1913 and became a state park in 1950.

At the Willey House Site, the buildings and grounds on 6.8 acres were surveyed as a historic district and found eligible for the National Register in 2013. A Phase 1A Archaeological Sensitivity Report, also by PAL in 2013, included extensive historic and prehistoric background and context. The 2013 survey area was confined to the park headquarters area at the Willey House Site. Crawford Notch State Park as a whole has not been evaluated for eligibility for the National Register as a larger district and the Dry River Campground has not been documented.

The Willey House Site Historic District was determined eligible for significance in the areas of conservation and recreation, specifically White Mountain tourism, and for the rustic architecture. The district recorded in 2013 counted five contributing buildings from the 1920s to ca. 1950. The Willey House site, the boulders, and the landscape as a whole contribute to the district.

The Dry River Campground at the south end of the state park dates around 1950 when the state park was established. The roads and site layout and the office building are historic features that would contribute to a historic district. The campground road may be the old logging railroad bed. The small office building at the campground entrance is historic, with characteristic wood shingle siding, 6/6 windows. A new washhouse was built in the early 2000s. Additional small buildings are four pit toilets, two of which are more than fifty years old, and three shelters of unknown age.

See Appendix for complete historic resources overview by the Preservation Company.



Circa 1925 postcard view of the two restroom, store, and restaurant cabins before they were combined into the present Restaurant Building. Overnight cabins, now demolished, are at the rear.



From NH State Parks Historic Context by Lisa Mausolf

SITE PLAN OPTION A

TOTAL NUMBER OF SITES: 87

1. CAMPGROUND ENTRANCE

> The main entry to the new campground is approximately .6 miles north of the existing Dry River Campground entrance

2. CAMPGROUND CORE

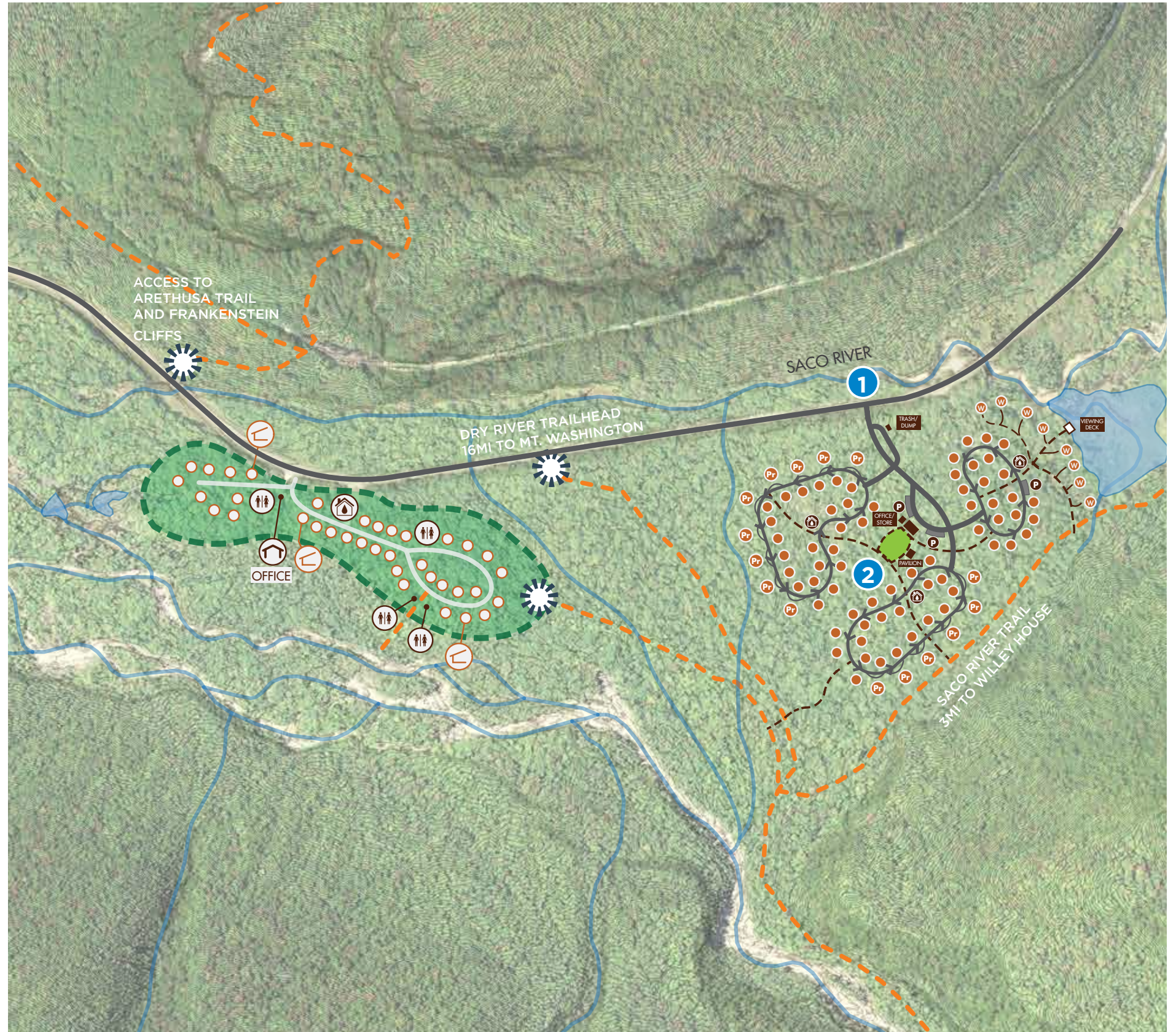
- > The office core is located at the center of the park and is combined with the common space
- > A centrally located office and store serves the new campground and Dry River campground

EXISTING

- Standard Site
- ◡ Lean-to Shelter
- 🏠 Structure
- 🚻 Pit Toilets
- 🛀 Bathhouse

PROPOSED

- Standard Site
- Pr Premium Site
- W Walk-in Site
- ↩ One-way Road
- 🏠 Structure
- P Parking
- 🛀 Bathhouse



SITE PLAN OPTION A CONTINUED

3. CAMPGROUND CORE

- > Centrally located office, store, and firewood shed
- > Creates a lively space that mixes the office and store with amenities such as a common green space and picnic pavilion

4. PHASABLE AND DIVERSE CAMPING PODS

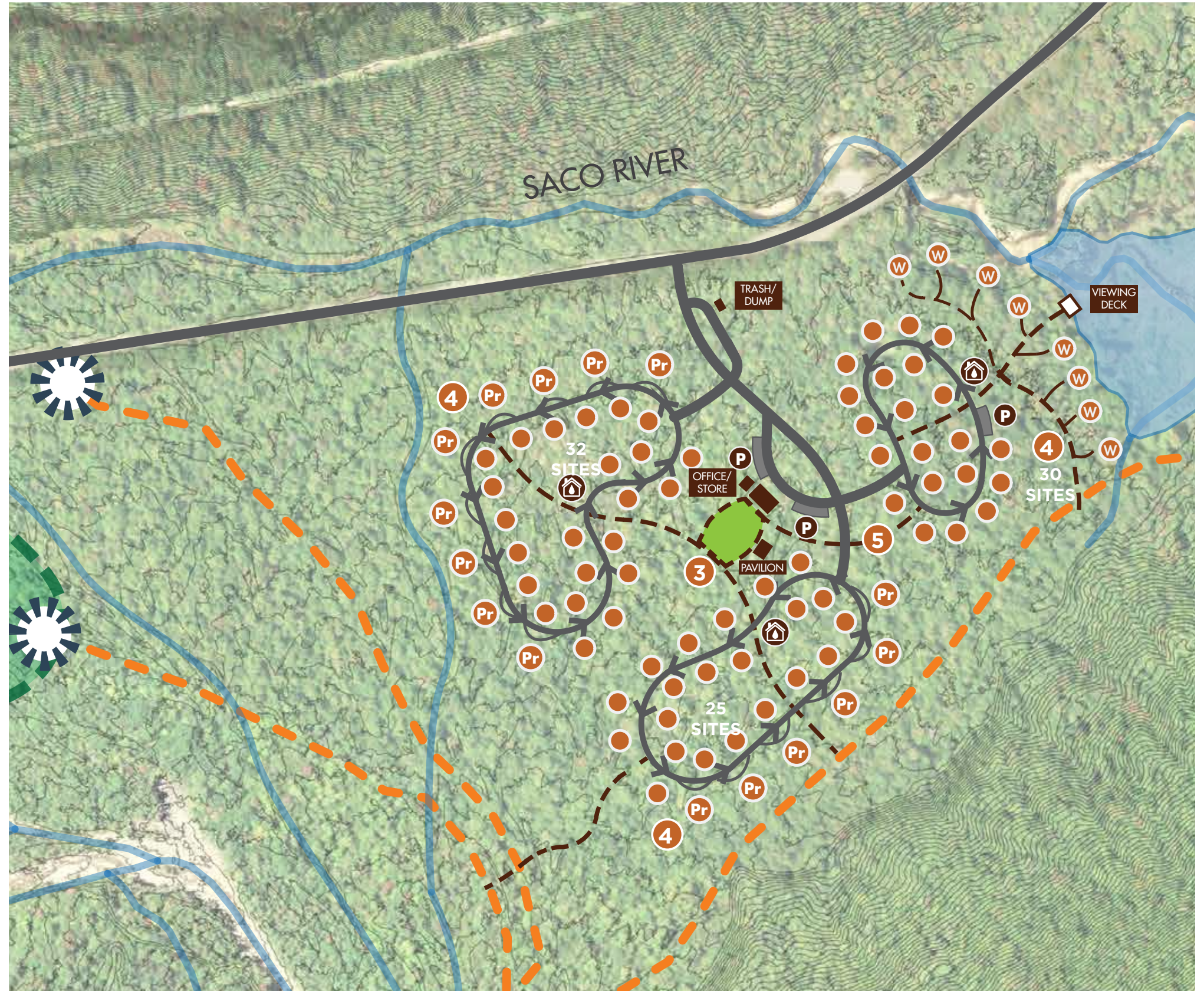
- > 3 camping pods with a diverse site selection
- > Mix of premium sites with water, sewer, and electric hookups, standard campsites, lean-tos, and cabins (% of each TBD)

5. PEDESTRIAN CONNECTIVITY AND CIRCULATION

- > Path network provides a safe alternative to walking/biking on roads
- > Road network is designed to minimize vehicular traffic within campground pods, and 1-way loops promote bike/ped safety

PROPOSED

- Standard Site
- Pr Premium Site
- W Walk-in Site
- One-way Road
- Structure
- P Parking
- Bathhouse



SITE PLAN OPTION B

TOTAL NUMBER OF SITES: 92






1. CAMPGROUND ENTRY

- > The main entry to the new campground is approximately .6 miles north of the existing Dry River Campground entrance
- > The office core is located at the entry of the park

2. CENTRAL COMMON SPACE

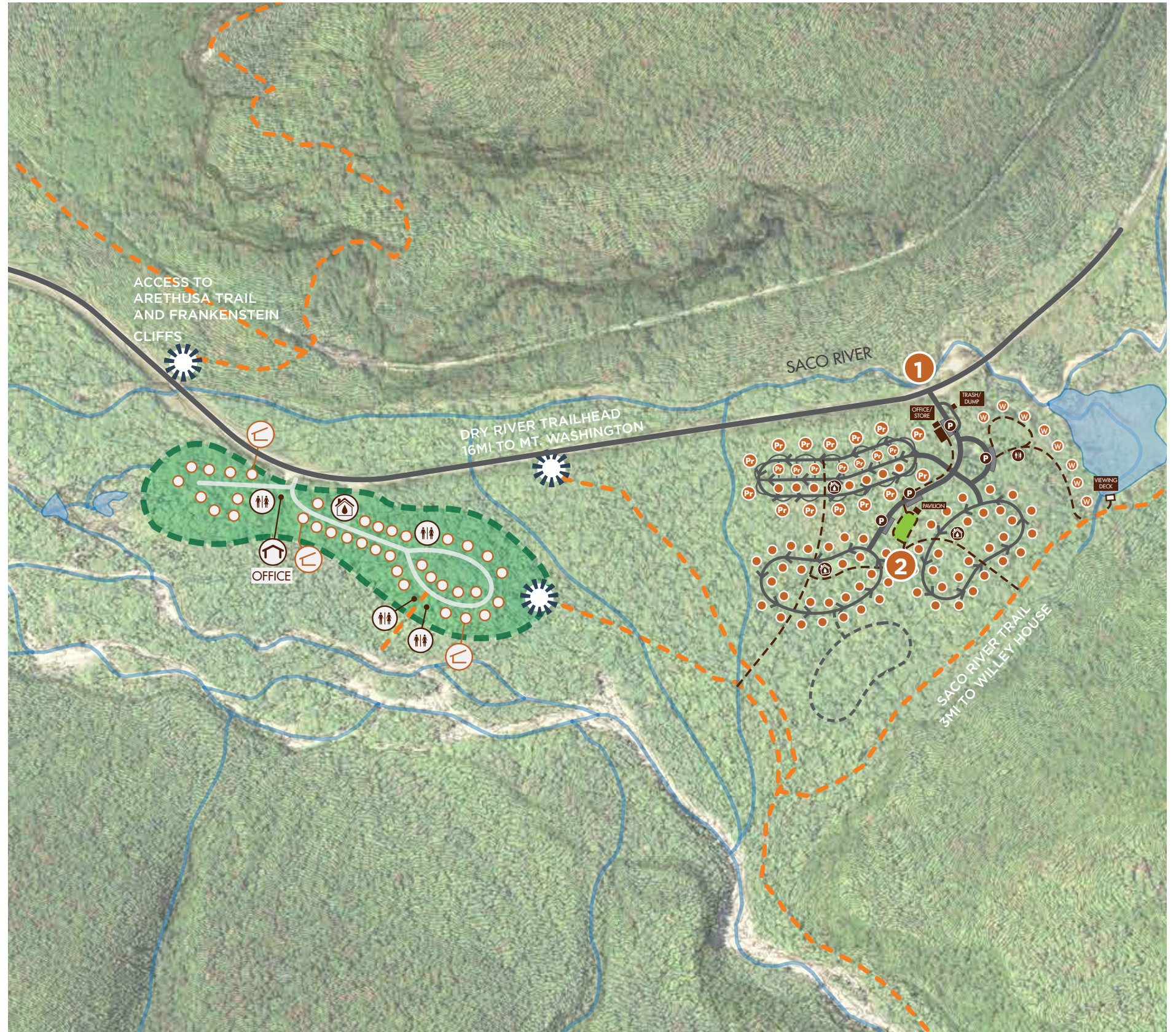
- > A common space consisting of a picnic pavilion and open green are located at the center of the park

EXISTING

- | | |
|--|---|
|  Standard Site |  Structure |
|  Lean-to Shelter |  Pit Toilets |
| |  Bathhouse |

PROPOSED

- | | |
|--|---|
|  Standard Site |  Structure |
|  Premium Site |  Parking |
|  Walk-in Site |  Bathhouse |
|  One-way Road | |



SITE PLAN OPTION B

CONTINUED

3. RV CAMPING POD

- > RV optimized camping pod with Premium Sites (water/sewer/electric)
- > 21 pull-through RV sites
- > 7 back-in sites (could be used for tent camping)

4. CAMPING PODS

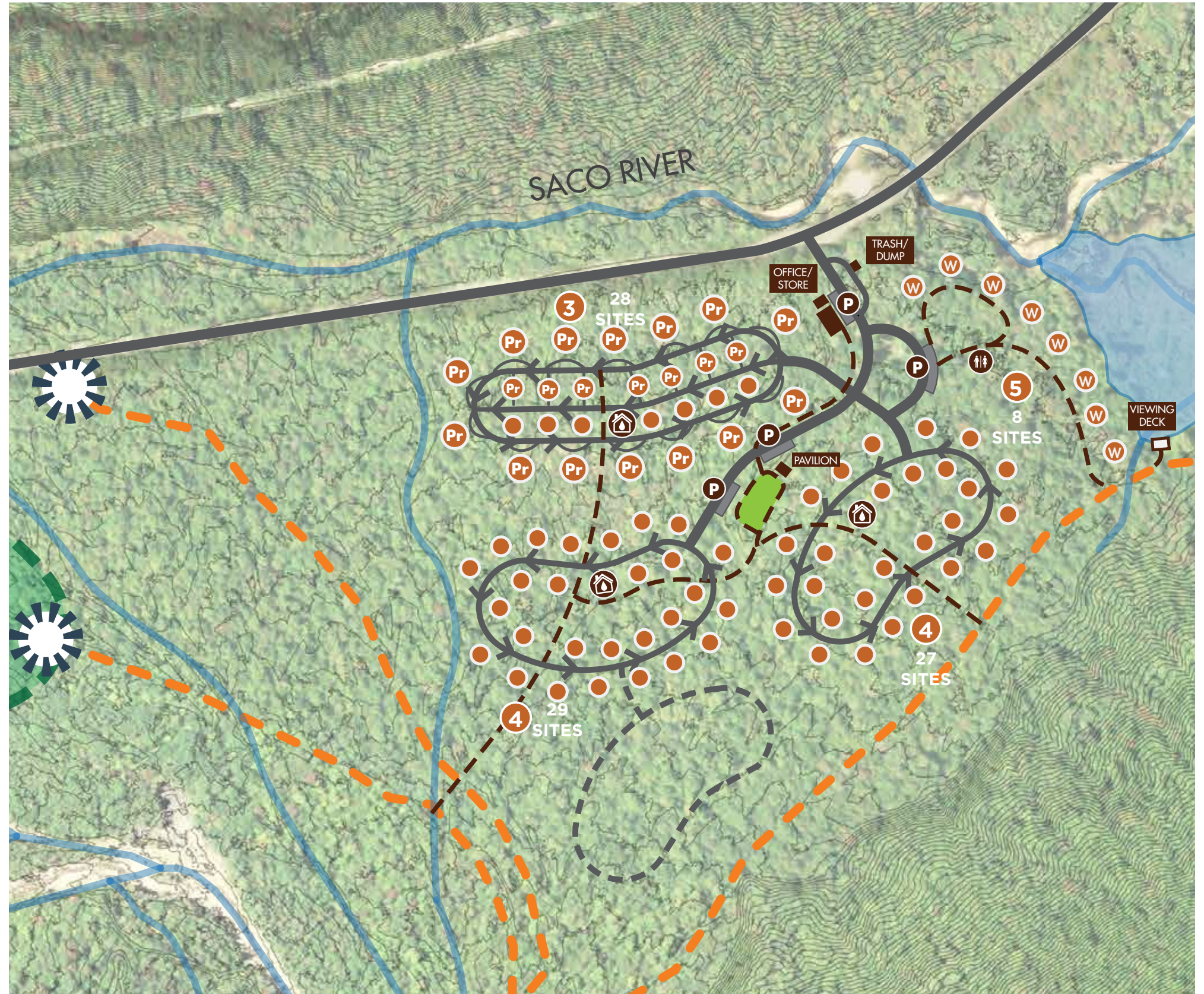
- > 2 camping pods consisting of standard campsites, cabins, lean-tos, and platform. Mix to be determined
- > Road network is designed to minimize vehicular traffic within campground pods, and 1-way loops promote bike/ped safety
- > Potential for another pod (additional 25 sites)

5. WALK-IN SITES

- > Dedicated walk-in camping area

PROPOSED

- Standard Site
- Pr Premium Site
- W Walk-in Site
- One-way Road
- Structure
- P Parking
- Bathhouse



SITE PLAN

NUMBER OF SITES

DRY RIVER: 32

EXPANSION AREA: 85

TOTAL NUMBER OF SITES: 117

1. DRY RIVER EXPANSION AREA

- > Centrally located office and common space with 3 camping pods made up of standard campsites, improved sites, and lean-to shelter sites.
- > Road network is designed to minimize vehicular traffic within campground pods and promote bike/pedestrian safety

2. DRY RIVER CAMPGROUND

- > The existing campground will undergo needed improvements and receive updated amenities

3. MULTI-USE PATH

- > A paved multi-use path will create a bike/ped connection between Dry River and the Expansion area
- > This will be the first section of the Crawford Notch recreation path

4. RECREATION TRAIL

- > A recreation trail will be located between Dry River Campground and the Expansion Area creating an informal play space for kids and adults, as well as opportunities for interpretive walks and education

5. VIEWING DECK

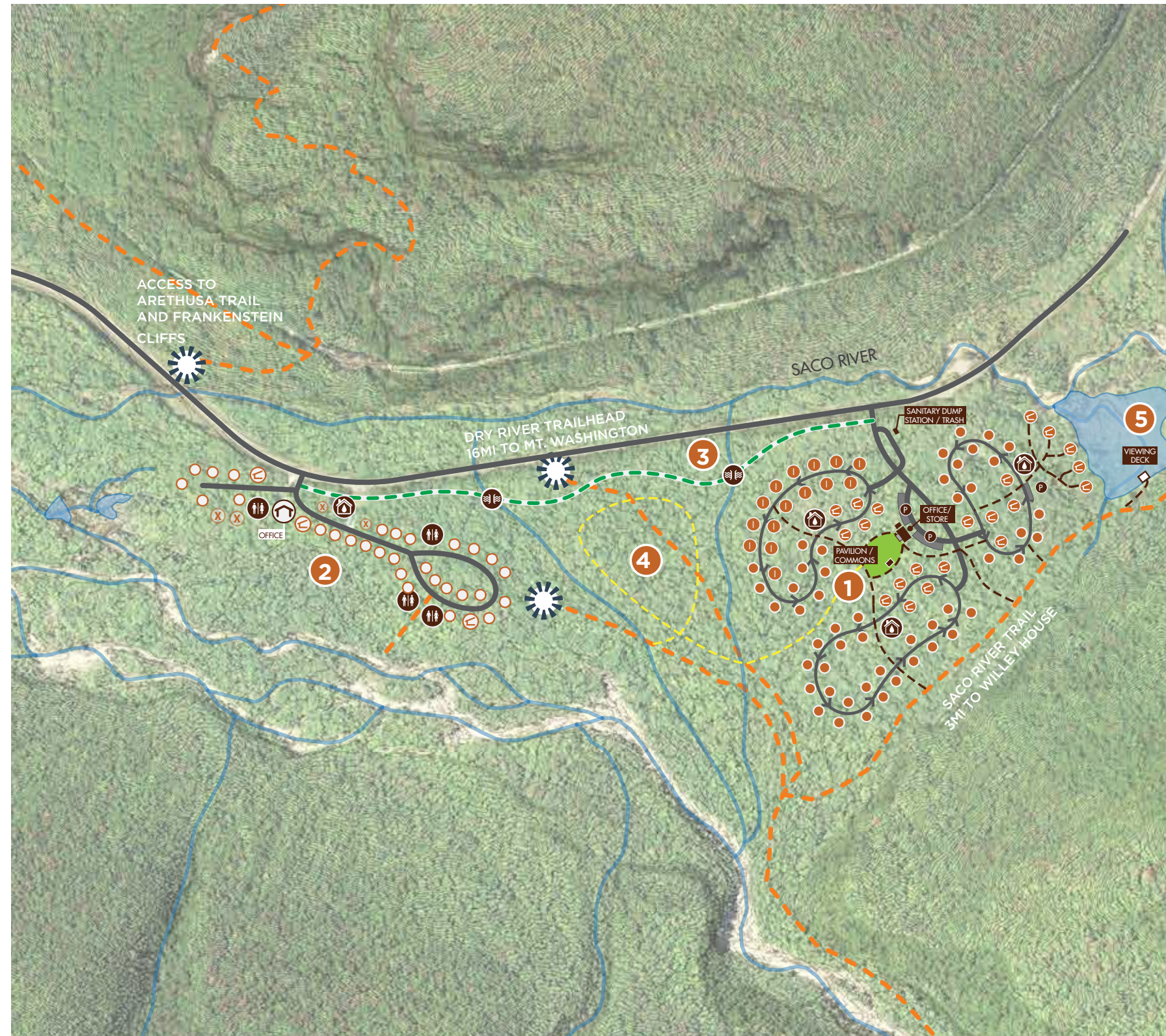
- > A viewing deck with panoramic views of the White Mountains will be an amenity for all campers

EXISTING

- Standard Site
- ◡ Lean-to Shelter
- 🏠 Structure

PROPOSED

- Standard Site
- ◡ Lean-to Shelter
- I Improved Site (W/E)
- 🏠 Structure
- X Removed Site
- P Parking
- 🚽 Bathhouse
- ♿ Pit Toilets
- 🌉 Rec Bridge
- Recreation Path
- ↩ One-way Road
- Multi-use Path



SITE PLAN EXPANSION AREA

1. CAMPING POD 1 - 30 SITES

- > 1 Bathhouse
- > 15 Improved Sites with water and electricity
- > 5 Lean-To Shelter Sites
- > 10 Standard Campsites

2. CAMPING POD 2 - 30 SITES

- > 1 Bathhouse
- > 6 Lean-To Shelter Sites
- > 24 Standard Campsites










3. CAMPING POD 3 - 25 SITES

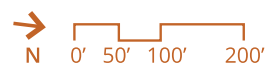
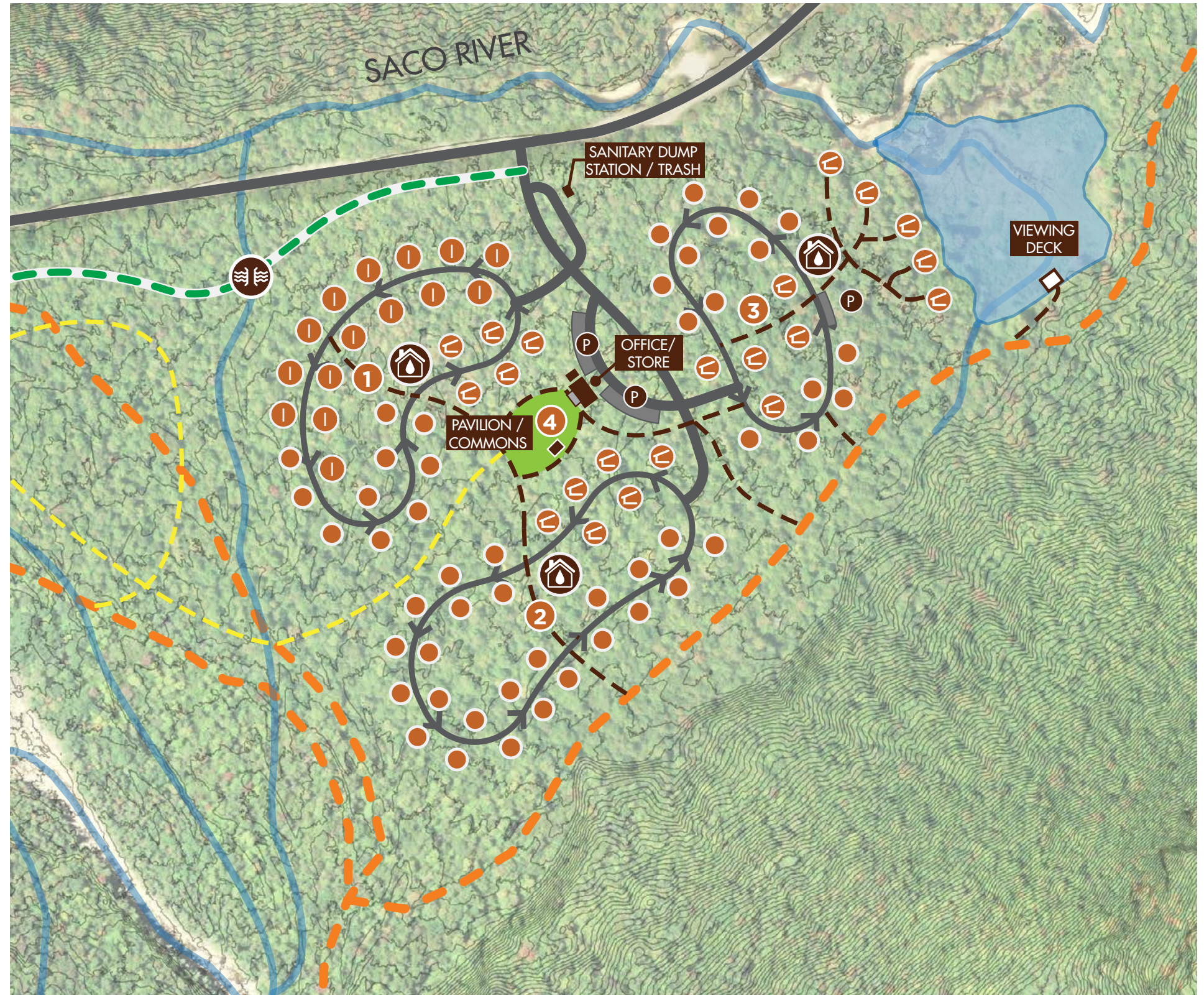
- > 1 Bathhouse
- > 10 Lean-To Shelter Sites (5 walk-in)
- > 15 Standard Campsites

4. CAMPGROUND CORE

- > The office core is located at the center of the park at a common area, which includes a shade pavilion and natural play area
- > The office and store will serve the Expansion Area and Dry River Campground

PROPOSED

- | | |
|--|---|
|  Standard Site |  Bathhouse |
|  Lean-To Shelter |  Rec Bridge |
|  Improved Site (W/E) |  Recreation Path |
|  Parking |  Multi-use Path |
| |  One-way Road |



SITE PLAN DRY RIVER

EXISTING SITES: 36

REMOVED SITES: 4

TOTAL NUMBER OF SITES: 32

1. REMOVE UNDERUTILIZED SITES

> 4 sites have been removed that have very low utilization rates

2. RENOVATE BATHHOUSE AND PIT TOILETS




> The bathhouse will be renovated and a dish washing station will be added on

> New Pit Toilets








3. CAMPGROUND ROAD AND SITE REPAIRS

> The campground road and campsites will be repaired and improved where needed

EXISTING

-  Standard Site
-  Lean-To Shelter
-  Structure

PROPOSED

-  Standard Site
-  Lean-To Shelter
-  Removed Site
-  Bathhouse
-  Pit Toilets
-  Rec Bridge
-  Recreation Path
-  Multi-use Path

